


IP Connect

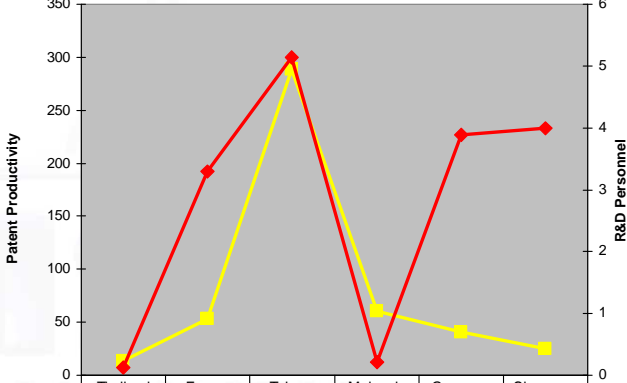
MSC
MALAYSIA
National ICT Initiative



www.mscomalaysia.my


Malaysia's Business R&D Personnel is Quite Productive



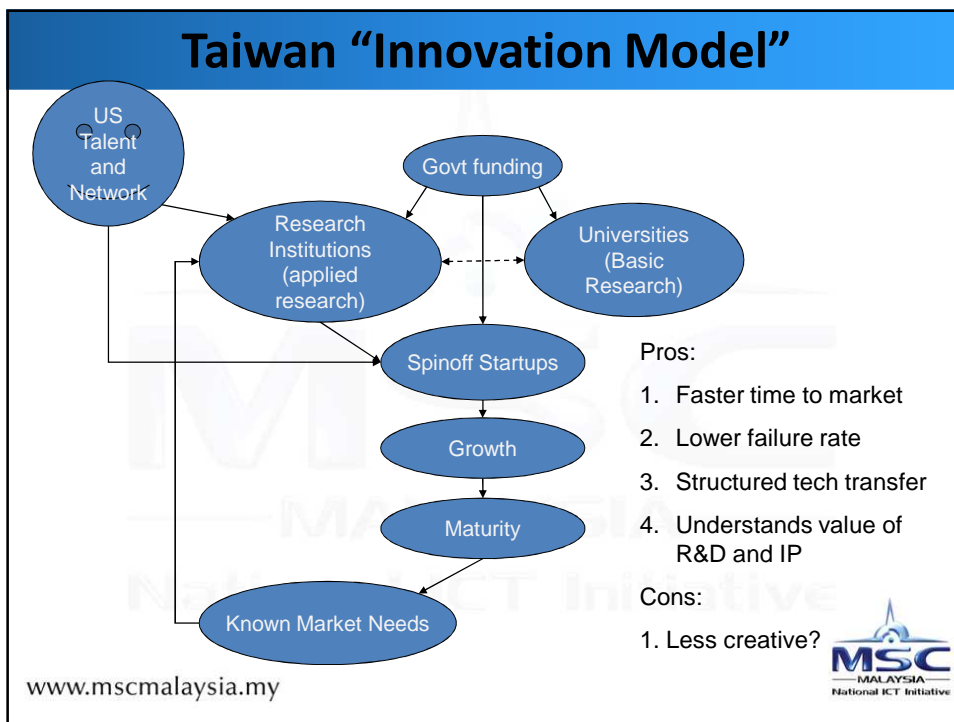
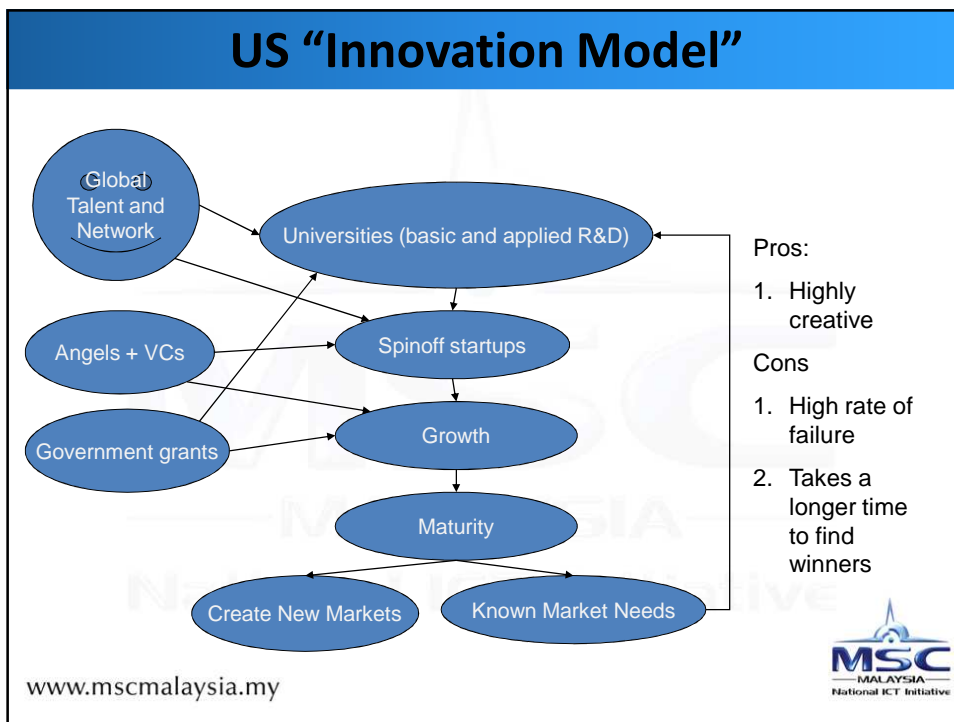


	Thailand	France	Taiwan	Malaysia	Germany	Singapore
Patent Productivity	13.4	52.9	288.7	60.1	40.6	24.9
R&D Personnel in Business per capita (full time work equivalent per 1000 people)	0.13	3.3	5.14	0.21	3.89	4

Source: IMD World Competitiveness Yearbook 2009



www.mscomalaysia.my



Problem Statement

- A major problem facing IHLs and Research Institutions in commercialisation of R&D is a lack of collaboration with the industry as a whole.
- The same survey also noted that MSC Malaysia Status Companies lack confidence in collaborating with IHLs and Research Institutions due to various limitations and concerns.
- *These concerns contribute to a lack of commercially-driven collaboration between IHLs, Research Institutions and MSC Malaysia Status Companies.*



Source: Strategic Research Study, IDC Aug 09, TPR

www.msomalaysia.my



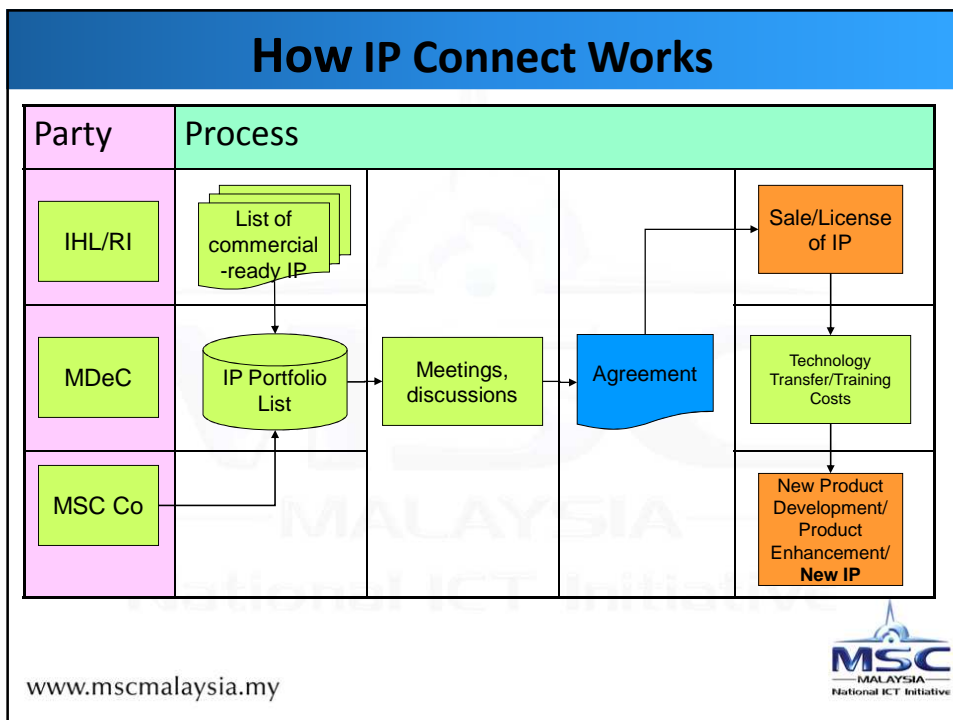
What is IP Connect?

- IP Connect is a platform to connect Research Institutions and Universities with MSC Malaysia Status companies in order to
 - Foster IP licensing or sale opportunities for Research Institutions and Universities
 - Create new productisation and/or commercialization opportunities for MSC Malaysia Status companies
 - Increase technology transfer between IHLs/RIs and MSC Malaysia Status Companies



www.msomalaysia.my





What Co\$ts will this Program cover?

The cost items that are subsidized under this program include:

1. Mobilization
2. Training
3. Licensing/Purchase
4. Related overheads



Quantum of subsidy will be determined by the merits of each proposal

www.msomalaysia.my 

Qualifying Criteria

- 51% Malaysian-owned MSC Malaysia-status companies
- Malaysian Research Institutions and Institutions of Higher Learning



www.msomalaysia.my



Expected Outcome

- Increased number of collaborations between IHLs, RIs and companies.
- Increased technology transfer from IHLs and RIs to industry.
- Increased creation and commercialization of technology/IP.
- More business savvy R&D personnel in IHLs/RIs and more R&D savvy personnel in industry.
- Higher quality R&D grant applications.

www.msomalaysia.my





**Encouraging greater
collaboration and greater
linkages between the basic
researchers and private industry
contributes to competitiveness.**

*University Technology Transfer and National Innovation Policy: Success
Stories from Brazil, Colombia and South Africa
Kevin M. Reichelt, Program Attorney, July 2007*

www.msomalaysia.my



Thank you!

chooitk@mdec.com.my

www.msomalaysia.my

